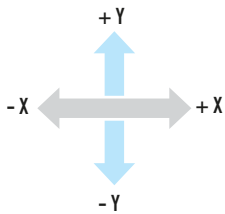


| FM Code | Product Code | Definition |
|----------|--------------|---|
| DKLRKBYF | DK25-YVFM | Dilatation Expansion Joint With Tie Rods FM Approved Grooved ± 25 mm Expansion |
| DKLRKBYF | DK50-YVFM | Dilatation Expansion Joint With Tie Rods FM Approved Grooved ± 50 mm Expansion |
| DKLRKBYF | DK75-YVFM | Dilatation Expansion Joint With Tie Rods FM Approved Grooved ± 75 mm Expansion |
| DKLRKBYF | DK100-YVFM | Dilatation Expansion Joint With Tie Rods FM Approved Grooved ± 100 mm Expansion |

GENERAL

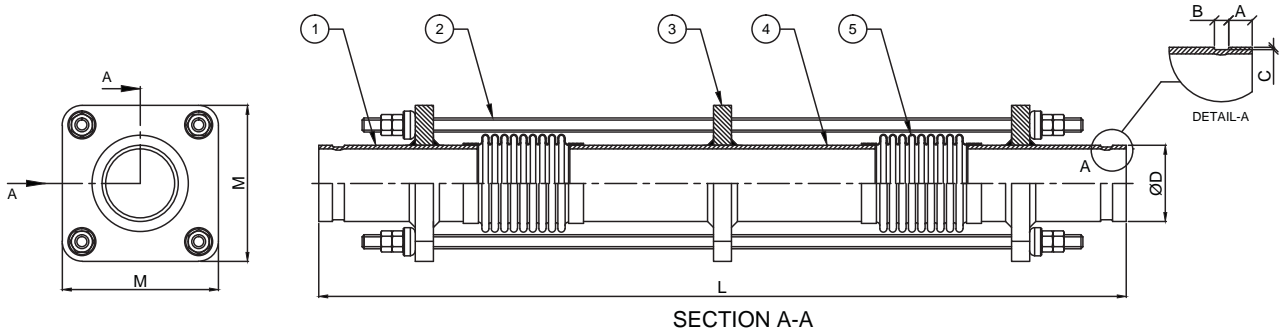
Dilatation expansion joints are the interconnection elements that ensure uninterrupted and efficient operation of the installation in the joints of buildings with different foundations (Dilatation), by absorbing strain and rupture that can occur in the pipelines due to building collapses or earthquakes, and lateral deviations. These types of expansion joints consisting of double bellows can be fixed to the desired expansion amounts by using limit rods. They can be used at all Dilatation points in building passages.



| Standard Product Materials | | Optional Product Materials |
|----------------------------|-------------------|--|
| Bellows | 1.4301 (AISI 304) | 1.4541 / 1.4401 / Titanium / Incoloy 800H / Inconel etc. |
| Tie Rod Holders | 1.0038 (St 37-2) | Stainless Steel |
| Grooved Connections | 1.0038 (St 37-2) | Stainless Steel |
| Intermediate Pipe | 1.0038 (St 37-2) | Stainless Steel |

| Design Parameters | |
|--------------------|--|
| Design Pressure | 250 psi |
| Design Temperature | +20°C (-90°C...+550°C) |
| Diameters | DN25 (1")...DN250 (10") |
| Movements | X: 60mm (± 30), Y: 50mm (± 25) / 100mm (± 50) / 150mm (± 75) / 200mm (± 100) |
| Standards | EJMA, EN 14917 |
| Certifications | FM Approved - TSE - CE Module H (Optional) - EAC |

**Please contact our sales team for your special requests.



| Part Number | Specifications | |
|-------------|---------------------|--------------------------|
| | Name | Material |
| 1 | Grooved Connections | 1.0038 (S235JR / St37-2) |
| 2 | Tie Rod | 1.0038 (S235JR / St37-2) |
| 3 | Tie Rod Holder | 1.0038 (S235JR / St37-2) |
| 4 | Intermediate Pipe | 1.0038 (S235JR / St37-2) |
| 5 | Bellows | 1.4301 (AISI 304) |

| Diameters | | LENGTH (L = mm) | | | | A (mm) | B (mm) | C (mm) | ØD (mm) | M (mm) | Effective Area (cm ²) |
|-----------|--------|----------------------|----------------------|----------------------|-----------------------|--------|--------|--------|---------|--------|-----------------------------------|
| | | DKLRKBYF | | | | | | | | | |
| | | DK25-YVFM | DK50-YVFM | DK75-YVFM | DK100-YVFM | | | | | | |
| | | X: ±30mm Y: ±25mm | X: ±30mm Y: ±50mm | X: ±30mm Y: ±75mm | X: ±30mm Y: ±100mm | | | | | | |
| DN25 | 1" | 550 | 650 | 750 | 850 | 15,8 | 7,1 | 1,6 | 33,7 | 111 | 19,0 |
| DN32 | 1 1/4" | 550 | 650 | 750 | 850 | 15,8 | 7,1 | 1,6 | 42,4 | 111 | 19,0 |
| DN40 | 1 1/2" | 550 | 650 | 750 | 850 | 15,8 | 7,1 | 1,6 | 48,3 | 111 | 24,7 |
| DN50 | 2" | 620 | 720 | 820 | 920 | 15,8 | 8,7 | 1,6 | 60,3 | 120 | 38,7 |
| DN65 | 2 1/2" | 620 | 720 | 820 | 920 | 15,8 | 8,7 | 1,9 | 76,1 | 156 | 58,0 |
| DN80 | 3" | 670 | 770 | 870 | 970 | 15,8 | 8,7 | 1,9 | 88,9 | 165 | 80,5 |
| DN100 | 4" | 670 | 770 | 870 | 970 | 15,8 | 8,7 | 2,1 | 114,3 | 183 | 129,0 |
| DN125 | 5" | 710 | 910 | 1010 | 1110 | 15,8 | 8,7 | 2,1 | 139,7 | 227 | 191,8 |
| DN150 | 6" | 710 | 910 | 1010 | 1110 | 15,8 | 8,7 | 2,1 | 165,1 | 247 | 262,7 |
| DN200 | 8" | 760 | 960 | 1050 | 1260 | 19,0 | 11,9 | 2,3 | 219,1 | 308 | 453,5 |
| DN250 | 10" | 860 | 1060 | 1150 | 1260 | 19,0 | 11,9 | 2,3 | 273 | 346 | 698,4 |

** X,Y value represents axial, lateral movements. Please contact our technical department for different movement requirements.