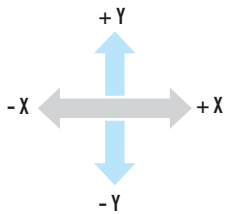


FM Code	Product Code	Definition
DKLRKBYF	DK25 - KBFM	Dilatation Expansion Joint With Tie Rods FM Approved Welding Ends ±25mm Expansion
DKLRKBYF	DK50 - KBFM	Dilatation Expansion Joint With Tie Rods FM Approved Welding Ends ±50mm Expansion
DKLRKBYF	DK75 - KBFM	Dilatation Expansion Joint With Tie Rods FM Approved Welding Ends ±75mm Expansion
DKLRKBYF	DK100 - KBFM	Dilatation Expansion Joint With Tie Rods FM Approved Welding Ends ±100mm Expansion

**GENERAL**

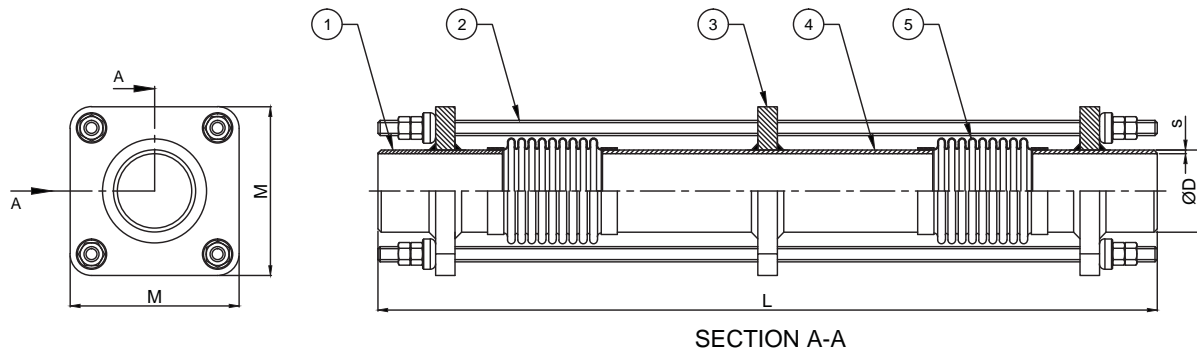
Dilatation expansion joints are the interconnection elements that ensure uninterrupted and efficient operation of the installation in the joints of buildings with different foundations (Dilatation), by absorbing strain and rupture that can occur in the pipelines due to building collapses or earthquakes, and lateral deviations. These types of expansion joints consisting of double bellows can be fixed to the desired expansion amounts by using limit rods. They can be used at all Dilatation points in building passages.



Standard Product Materials		Optional Product Materials
Bellows	1.4301 (AISI 304)	1.4541 / 1.4401 / Titanium / Incoloy 800H / Inconel etc.
Tie Rod Holders	1.0038 (St 37-2)	Stainless Steel
Welding Ends	1.0038 (St 37-2)	Stainless Steel
Intermediate Pipe	1.0038 (St 37-2)	Stainless Steel

Design Parameters	
Design Pressure	250 psi
Design Temperature	+20°C (-90°C...+550°C)
Diameters	DN25 (1")...DN250 (10")
Movements	X:60mm (±30), Y: 50mm (±25) / 100mm (±50) / 150mm (±75) / 200mm (±100)
Standards	EJMA, EN 14917
Certifications	FM Approved - TSE - CE Module H (Optional) - EAC

\*\*Please contact our sales team for your special requests.



Part Number	Specifications	
	Name	Material
1	Welding Ends	1.0038 (S235JR / St37-2)
2	Tie Rod	1.0038 (S235JR / St37-2)
3	Tie Rod Holder	1.0038 (S235JR / St37-2)
4	Intermediate Pipe	1.0038 (S235JR / St37-2)
5	Bellows	1.4301 (AISI 304)

Diameters		LENGTH (L = mm)				ØD (mm)	s (mm)	M (mm)	Effective Area (cm <sup>2</sup> )
		DKLRKBYF							
		DK25-KBFM	DK50-KBFM	DK75-KBFM	DK100-KBFM				
		X: ±30mm Y: ±25mm	X: ±30mm Y: ±50mm	X: ±30mm Y: ±75mm	X: ±30mm Y: ±100mm				
DN25	1"	550	650	750	850	33,7	3,2	111	19,0
DN32	1 1/4"	550	650	750	850	42,4	3,2	111	19,0
DN40	1 1/2"	550	650	750	850	48,3	3,2	111	24,7
DN50	2"	620	720	820	920	60,3	3,6	120	38,7
DN65	2 1/2"	620	720	820	920	76,1	3,6	156	58,0
DN80	3"	670	770	870	970	88,9	4	165	80,5
DN100	4"	670	770	870	970	114,3	4,5	183	129,0
DN125	5"	710	910	1010	1110	139,7	5	227	191,8
DN150	6"	710	910	1010	1110	165,1	5	247	262,7
DN200	8"	760	960	1050	1260	219,1	6,3	308	453,5
DN250	10"	860	1060	1150	1260	273	6,3	346	698,4

\*\* X,Y value represents axial, lateral movements. Please contact our technical department for different movement requirements.