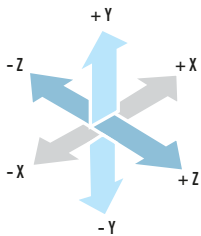


FM Code	Product Code	Definition
KMKBYF	KM100 - YVFM	Dilatation & Earthquake Expansion Joint FM Approved Grooved ± 50 mm Expansion
KMKBYF	KM200 - YVFM	Dilatation & Earthquake Expansion Joint FM Approved Grooved ± 100 mm Expansion
KMKBYF	KM300 - YVFM	Dilatation & Earthquake Expansion Joint FM Approved Grooved ± 150 mm Expansion
KMKBYF	KM400 - YVFM	Dilatation & Earthquake Expansion Joint FM Approved Grooved ± 200 mm Expansion

GENERAL

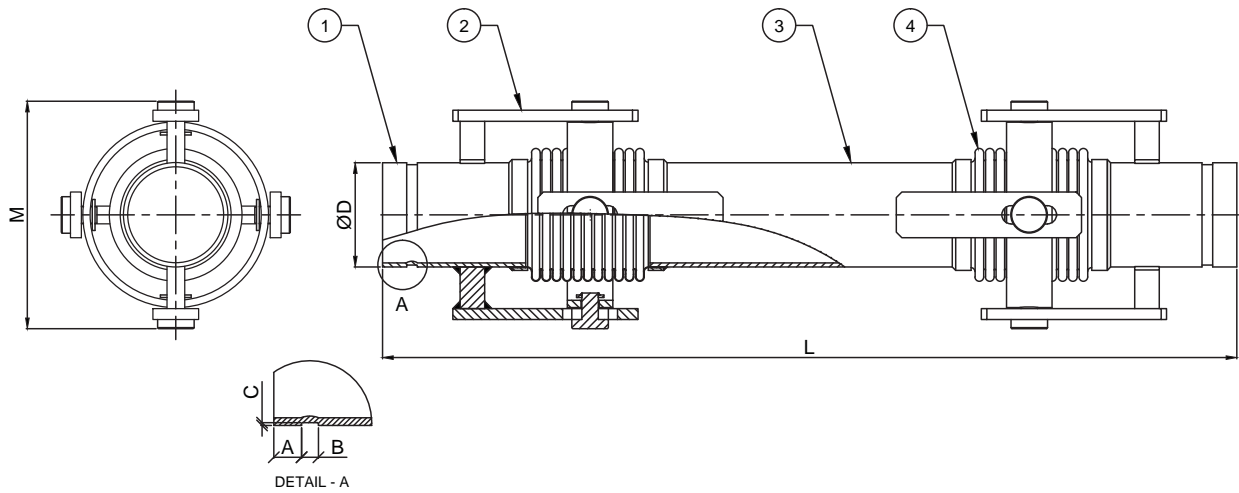
Dilatation & Earthquake expansion joints are the flexible connection elements that minimize the risk of breakage that may occur in the system as a result of seismic (earthquake, building collapses, etc.) movements by damping the three dimensional movement as axial, lateral and angular and provide the continuity of the system by removing the stress on the rigid pipe. The Dilatation & Earthquake Expansion joints, which are designed to meet the movement in three different directions (axial, lateral and angular) are widely used in fire circuits since they are FM approved. They can also be used in places such as all building passages, Dilatation points etc.



Standard Product Materials		Optional Product Materials	
Bellows	1.4301 (AISI 304)	1.4541 / 1.4401 / Titanium / Incoloy 800H / Inconel etc.	
Joint Arms	1.0038 (St 37-2)	Stainless Steel	
Grooved Connections	1.0038 (St 37-2)	Stainless Steel	
Intermediate Pipe	1.0038 (St 37-2)	Stainless Steel	

Design Parameters	
Design Pressure	250 psi
Design Temperature	+20°C (-90°C...+550°C)
Diameters	DN25 (1")...DN300 (12")
Movements	X: ± 50 mm, Y,Z: ± 50 mm / Y,Z: ± 100 mm / Y,Z: ± 150 mm / Y,Z: ± 200 mm
Standards	EJMA, EN 14917
Certifications	FM Approved - TSE - CE Module H (Optional) - EAC

**Please contact our sales team for your special requests.



Part Number	Specifications	
	Name	Material
1	Grooved Connections	1.0038 (S235JR / St37-2)
2	Joint Arm	1.0038 (S235JR / St37-2)
3	Intermediate Pipe	1.0038 (S235JR / St37-2)
4	Bellows	1.4301 (AISI 304)

Diameters		LENGTH (L = mm)				A (mm)	B (mm)	C (mm)	ØD (mm)	M (mm)	Effective Area (cm ²)
		KMKBYF									
		KM100-YVFM	KM200-YVFM	KM300-YVFM	KM400-YVFM						
		X: ±50mm Y: ±50mm Z: ±50mm	X: ±50mm Y: ±100mm Z: ±100mm	X: ±50mm Y: ±150mm Z: ±150mm	X: ±50mm Y: ±200mm Z: ±200mm						
DN25	1"	710	910	1110	1310	15,8	7,1	1,6	33,7	160	19,0
DN32	1 1/4"	710	910	1110	1310	15,8	7,1	1,6	42,4	160	19,0
DN40	1 1/2"	710	910	1110	1310	15,8	7,1	1,6	48,3	160	24,7
DN50	2"	770	970	1170	1380	15,8	8,7	1,6	60,3	185	38,7
DN65	2 1/2"	770	970	1220	1480	15,8	8,7	1,9	76,1	205	58,0
DN80	3"	820	1020	1250	1480	15,8	8,7	1,9	88,9	215	80,5
DN100	4"	820	1020	1280	1530	15,8	8,7	2,1	114,3	280	129,0
DN125	5"	950	1150	1460	1750	15,8	8,7	2,1	139,7	335	191,8
DN150	6"	950	1150	1460	1750	15,8	8,7	2,1	165,1	345	262,7
DN200	8"	1120	1340	1690	2040	19,0	11,9	2,3	219,1	435	453,5
DN250	10"	1120	1340	1690	2040	19,0	11,9	2,3	273	495	698,4
DN300	12"	1150	1525	1900	2265	19,0	11,9	2,7	323,9	565	967,0

** X,Y,Z value represents axial, lateral, angular movements. Please contact our technical department for different movement requirements.