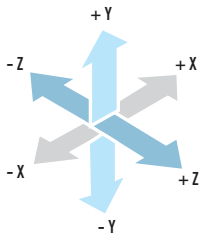


Product Code	Definition
KM100-GD	Dilatation&Earthquake Expansion Joint Threaded Galvanised ±50mm Expansion
KM200-GD	Dilatation&Earthquake Expansion Joint Threaded Galvanised ±100mm Expansion
KM300-GD	Dilatation&Earthquake Expansion Joint Threaded Galvanised ±150mm Expansion
KM400-GD	Dilatation&Earthquake Expansion Joint Threaded Galvanised ±200mm Expansion

GENERAL

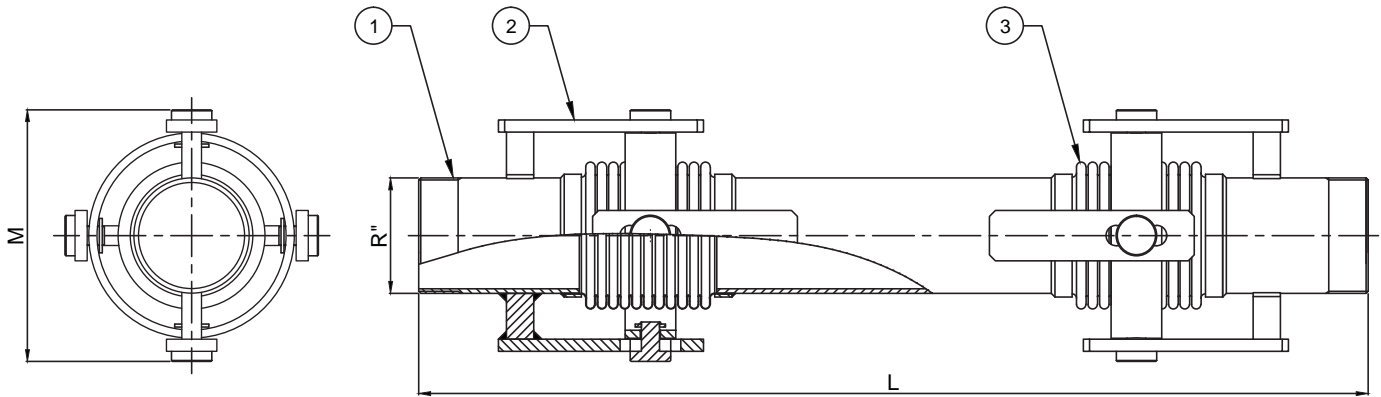
Dilatation & Earthquake expansion joints are the flexible connection elements that minimize the risk of breakage that may occur in the system as a result of seismic (earthquake, building collapses, etc.) movements by damping the three dimensional movement as axial, lateral and angular and provide the continuity of the system by removing the stress on the rigid pipe. The Dilatation & Earthquake Expansion joints, which are designed to meet the movement in three different directions (axial, lateral and angular) are widely used in domestic piping systems. They can also be used in places such as all building passages, Dilatation points etc..



Standard Product Materials		Optional Product Materials
Bellows	1.4301 (AISI 304)	1.4541 / 1.4401 / Titanium / Incoloy 800H / Inconel etc.
Joint Arms	1.0038 (St 37-2 Galvanised)	Stainless Steel
Threaded Connections	1.0038 (St 37-2 Galvanised)	Stainless Steel

Design Parameters	
Design Pressure	16 Bar (1 Bar...64 Bar)
Design Temperature	+20 °C
Diameters	DN25 (1")...DN300 (12")
Movements	X: ±50mm, Y,Z: ±50mm / Y,Z: ±100mm / Y,Z: ±150mm / Y,Z: 200mm
Design Standards	EJMA, EN 14917
Certifications	TSE, CE - Module H (Optional) - EAC

**Please contact our sales team for your special requests.



Part Number	Specifications	
	Name	Material
1	Threaded Connection	1.0038 (S235JR / St37-2 - Galvanised)
2	Joint Arm	1.0038 (S235JR / St37-2 - Galvanised)
3	Bellows	1.4301 (AISI 304)

Diameters	LENGTH (L = mm)				M (mm)	Effective Area (cm ²)
	KM100-GD	KM200-GD	KM300-GD	KM400-GD		
	X: ±50mm Y: ±50mm Z: ±50mm	X: ±50mm Y: ±100mm Z: ±100mm	X: ±50mm Y: ±150mm Z: ±150mm	X: ±50mm Y: ±200mm Z: ±200mm		
R 1"	930	1130	1330	1530	170	19,0
R 1 1/4"	810	1010	1210	1410	170	19,0
R 1 1/2"	810	1010	1210	1410	170	24,7
R 2"	870	1070	1270	1480	195	38,7
R 2 1/2"	870	1070	1320	1580	210	58,0
R 3"	920	1120	1350	1580	220	80,5
R 4"	920	1120	1380	1630	265	129,0
R 5"	1050	1250	1560	1850	310	191,8
R 6"	1050	1250	1560	1850	335	262,7

** X,Y,Z value represents axial, lateral, angular movements. Please contact our technical department for different movement requirements.