

Product Code	Definition
KK10 - EPDM	Rubber Expansion Joint EPDM Rubber / Ductile Iron Casting Flanged
KK20 - EPDM	Rubber Expansion Joint EPDM Rubber / Carbon Steel Flanged
KK10 - NBR	Rubber Expansion Joint NBR Rubber / Ductile Iron Casting Flanged
KK20 - NBR	Rubber Expansion Joint NBR Rubber / Carbon Steel Flanged

GENERAL

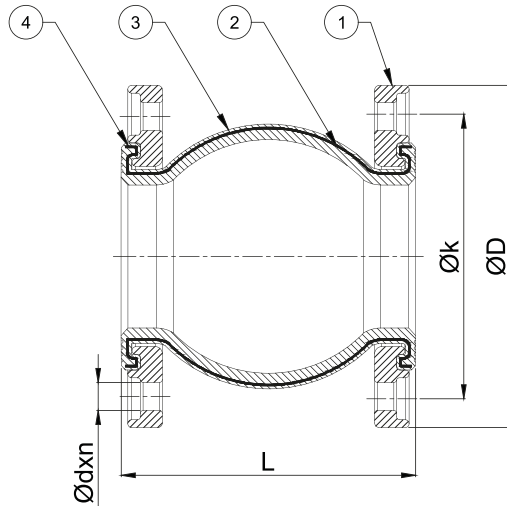
Rubber expansion joints are elastic and high strength parts that absorb vibration and noise in systems. They are indispensable elements of pressure or vacuum systems. Due to the elasticity of rubber based materials, they absorb high noise and vibration in all directions. Since their flanges are rotary type, they are easy to install. Due to its special design, it is not necessary to use gasket during its installation. Expansion joint strength and vibration damping capability increase thanks to special steel courts inside the rubber material. They are widely used in ventilation and air conditioning lines, shipbuilding industry, pumps inlets and outlets, waste water and sewage systems.



Standard Product Materials		Optional Product Materials
Bellows	EPDM	NBR, Neopren
Rubber Reinforcement	Steel Wire Cord Fabric	-
Flangelar	GGG 40.3 (Ductile Iron Casting)	1.0038, Stainless Steel

Design Parameters	
Design Pressure (Max.)	10 Bar
Design Temperature (Max.)	+20 °C (Max. 100 °C)
Diameters	DN32 (1 1/4")...DN700 (28")

**Please contact our sales team for your special requests.



Part Number	Specifications	
	Name	Material
1	Flange	GGG-40.3 (Ductile Iron Casting)
2	Rubber Reinforcement	Cord Fabric
3	Rubber Bellows	EPDM/ NBR
4	Steel Ring	-

Diameters		KK10-EPDM	KK20-EPDM	KK10-NBR	KK20-NBR	ØD (mm)	Øk (mm)	Ød x n (mm)
		LENGTH(L=mm)	LENGTH(L=mm)	LENGTH(L=mm)	LENGTH(L=mm)			
DN32	1 1/4"	100	100	100	100	140	100	18*4
DN40	1 1/2"	100 , 130, 150	100 , 130, 150	100 , 130, 150	100 , 130, 150	150	110	18*4
DN50	2"	100 , 130, 150	100 , 130, 150	100 , 130, 150	100 , 130, 150	165	125	18*4
DN65	2 1/2"	100 , 130, 150	100 , 130, 150	100 , 130, 150	100 , 130, 150	185	145	18*4
DN80	3"	100 , 130, 150	100 , 130, 150	100 , 130, 150	100 , 130, 150	200	160	18*8
DN100	4"	100 , 130, 150	100 , 130, 150	100 , 130, 150	100 , 130, 150	220	180	18*8
DN125	5"	120 , 130, 150 160, 175	120 , 130, 150 160, 175	120 , 130, 150 160, 175	120 , 130, 150 160, 175	250	210	18*8
DN150	6"	120 , 130 150, 160	120 , 130 150, 160	120 , 130 150, 160	120 , 130 150, 160	285	240	22*8
DN200	8"	120 , 130 150, 175	120 , 130 150, 175	120 , 130 150, 175	120 , 130 150, 175	340	295	22*12
DN250	10"	100, 130 175, 250	100, 130 175, 250	100, 130 175, 250	100, 130 175, 250	405	355	26*12
DN300	12"	100, 130 , 190 210, 250, 260	100, 130 , 190 210, 250, 260	100, 130 , 190 210, 250, 260	100, 130 , 190 210, 250, 260	460	410	26*12
DN350	14"	160, 210 235, 260	160, 210 235, 260	160, 210 235, 260	160, 210 235, 260	520	470	26*16
DN400	16"	220, 235, 240	220, 235, 240	220, 235, 240	220, 235, 240	580	525	30*16
DN450	18"	220, 250	220, 250	220, 250	220, 250	640	585	30*20
DN500	20"	100, 200, 270	100, 200, 270	100, 200, 270	100, 200, 270	715	650	33*20
DN600	24"	260, 300	260, 300	260, 300	260, 300	840	770	36*20
DN700	28"	275, 300	275, 300	275, 300	275, 300	910	840	36*24

**Flange diameters are according to PN16 pressure class.

**Written in bold punto lengths are present stock products.